

MASK



Disney
Oz
THE GREAT
AND POWERFUL

Have an adult cut out the mask on the dotted lines. Use string to hold it in place or attach it to a popsicle stick



CAN YOU HELP FINLEY THE MONKEY FIND CHINA GIRL AT THE END OF THE MAZE?



MEMORY CARDS

HAVE AN ADULT CUT OUT ON THE DOTTED LINES ALL THE CARDS FROM ALL THREE PAGES. PLACE THE CARDS FACE DOWN ON A SMOOTH SURFACE AND MIX THEM ALL UP. TURN OVER TWO CARDS AT A TIME TO SEE IF THEY MATCH. IF THEY DON'T, TURN THEM FACE DOWN AGAIN. TAKE TURNS TURNING OVER CARDS USING YOUR MEMORY TO RECALL WHERE A MATCHING CARD MAY BE LOCATED. THE PERSON WHO MATCHED THE MOST PAIRS WINS!



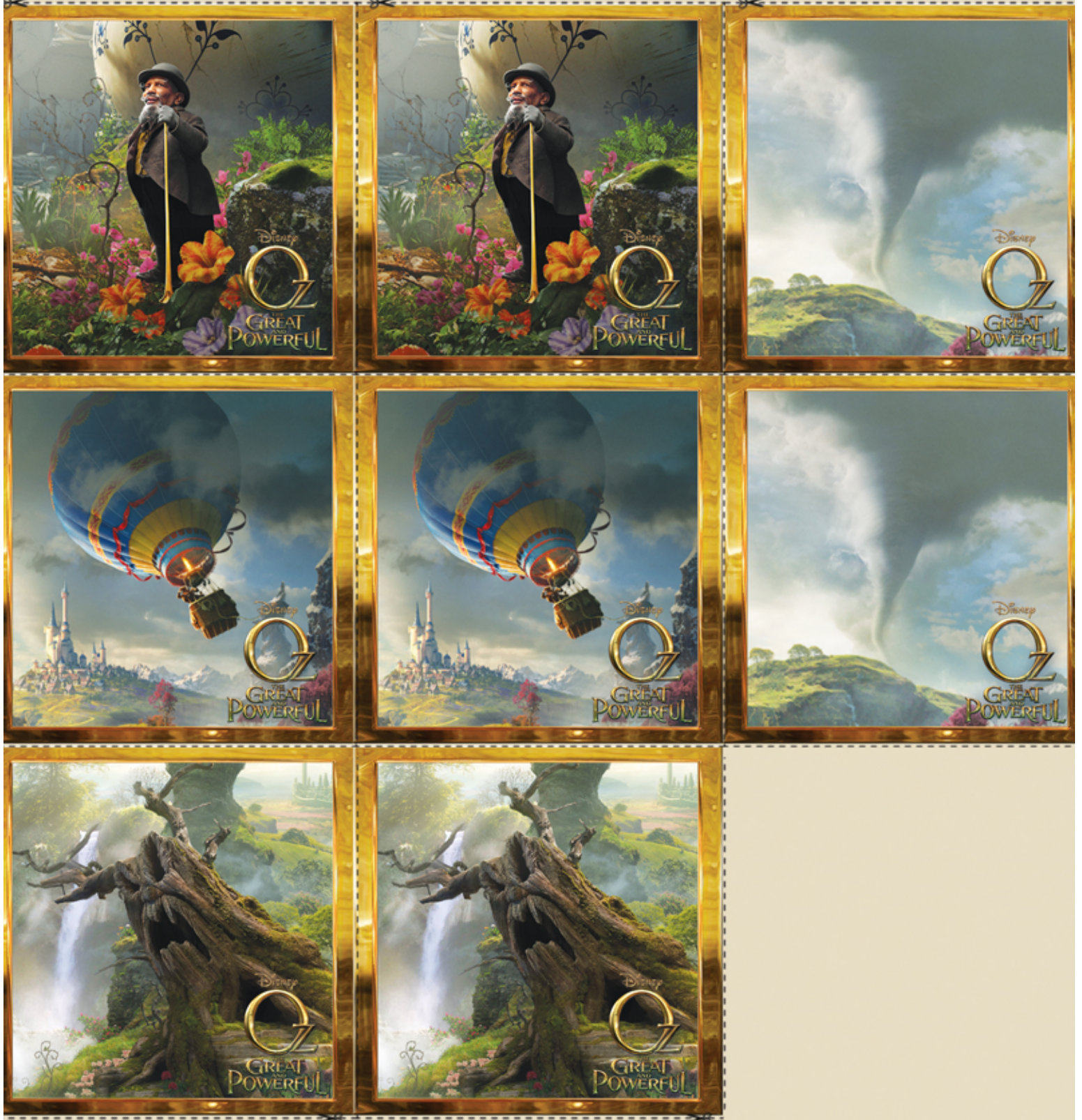
MEMORY CARDS

HAVE AN ADULT CUT OUT ON THE DOTTED LINES ALL THE CARDS FROM ALL THREE PAGES. PLACE THE CARDS FACE DOWN ON A SMOOTH SURFACE AND MIX THEM ALL UP. TURN OVER TWO CARDS AT A TIME TO SEE IF THEY MATCH. IF THEY DON'T, TURN THEM FACE DOWN AGAIN. TAKE TURNS TURNING OVER CARDS USING YOUR MEMORY TO RECALL WHERE A MATCHING CARD MAY BE LOCATED. THE PERSON WHO MATCHED THE MOST PAIRS WINS!



MEMORY CARDS

HAVE AN ADULT CUT OUT ON THE DOTTED LINES ALL THE CARDS FROM ALL THREE PAGES. PLACE THE CARDS FACE DOWN ON A SMOOTH SURFACE AND MIX THEM ALL UP. TURN OVER TWO CARDS AT A TIME TO SEE IF THEY MATCH. IF THEY DON'T, TURN THEM FACE DOWN AGAIN. TAKE TURNS TURNING OVER CARDS USING YOUR MEMORY TO RECALL WHERE A MATCHING CARD MAY BE LOCATED. THE PERSON WHO MATCHED THE MOST PAIRS WINS!



SPOT THE DIFFERENCE

SOMETHING'S GONE WRONG IN THE LAND OF OZ THE GREAT AND POWERFUL! CAN YOU SPOT THE EIGHT DIFFERENCES BETWEEN THE TOP AND BOTTOM IMAGES? LOOK CLOSELY!

